

# Comparison between modified LST Fastfloat and conventional HF methods for pollen preparation in highly minerogenic sediments



TIINA ESKOLA<sup>1\*</sup>, RIITTA KONTIO<sup>1</sup> AND JUHA PEKKA LUNKKA<sup>1</sup>

<sup>1</sup>*Oulu Mining School, P.O. Box 3000, 90014 University of Oulu, Finland*



## Abstract

Pollen analysis is a commonly used method to interpret vegetation and environmental change. The standard pollen preparation technique in minerogenic sediments involves the use of hydrofluoric acid (HF) which is highly toxic. Currently the European legislation requires that hazardous chemicals should be substituted with less hazardous or non-toxic chemicals if possible. In the present paper the authors introduce a safer pollen preparation method, based on the use of low-toxic heavy liquid lithium heteropolytungstate (LST Fastfloat) and provide instructions for pollen preparation with the LST Fastfloat method. Furthermore, five paired samples were processed from clayey and silty sediments with LST Fastfloat and conventional HF methods and the pollen and spore counting results obtained from these two methods were compared to test if there is statistically significant differences between the taxa. Calculation of the 95 % confidence interval revealed statistical agreement in all studied taxa except one taxon in one sample pair. However, the study revealed systematic differences within two taxa, *Betula* and *Pinus*. Thus caution is needed when comparing results obtained by HF and heavy liquid (LST Fastfloat) methods.

---

Keywords: Pollen preparation, heavy liquid, LST Fastfloat, hydrofluoric acid, minerogenic sediment

---

\*Corresponding author (e-mail: [tiina.eskola@oulu.fi](mailto:tiina.eskola@oulu.fi))

---

Editorial handling: Niina Kuosmanen (e-mail: [kuosmanen.niina@gmail.com](mailto:kuosmanen.niina@gmail.com))

## 1. Introduction

Pollen analysis is the principal method for reconstructing the past vegetation and environmental change. Therefore, it is also one of the most important methods used to study climate change and human impact on environment (e.g. Faegri & Iversen, 1989; Bennet & Willis, 2001). The pollen analysis technique has been used over a century (Faegri & Iversen, 1989) and several methods for extracting pollen from different types of sediments has been developed ever since. In many cases, the removal of inorganic and mineral particles, as well as unwanted organic impurities, is in the main role to increase pollen concentration in the prepared samples and to ensure clear and accurate identification of pollen and spores. Therefore, the selection of the most suitable method for the pollen analysis for different type of samples and the time spent in a laboratory for pollen preparation save time and effort in identification and pollen counting.

When extracting pollen from various sediment types, e.g. peat, gyttja, clay, sand-rich sediments, till or sedimentary rocks, no single method or protocol can be recommended as a standard method that ought to be used (Moore et al., 1991; Loader & Hemming, 2004) and different samples react uniquely with the same treatment (Traverse, 2007). This means that the organic content, lithology, mineralogy and the level of induration effect the selection for the different chemical and/or physical treatments when extracting and concentrating pollen (Riding & Kyffin-Hughes, 2004). The combination of methods chosen aims to produce clean samples with no, or minimum amount of, unwanted matrix in order to save counting time, and also to decrease the identification inaccuracy. Care should be taken not to alter or lose neither the potentially valuable pollen and spore component nor the (total) concentration during the pollen extraction procedures.

It is particularly challenging to extract biostratigraphical information from the Pleistocene inter-

stadial and stadial terrestrial sediments with low organic content using pollen analysis. For example, Late Pleistocene interstadial and stadial sediments deposited in lake or fluvial environments and paleosoils in formerly glaciated areas like in Finland, are almost exclusively rich in minerogenic material with a low organic content (cf. Nenonen, 1995). The extraction of pollen from interstadial / stadial sediments (silt and clay) with low organic content, has yielded low pollen concentrations when non-heavy liquid methods have been used (cf. Hirvas, 1991; Nenonen, 1995; Lunkka et al., 2008; Pitkäranta et al., 2014). The increase of a pollen concentration yield and decrease of impurities can better be achieved using heavy liquid methods rather than non-heavy liquid pollen extraction methods normally used for organic-rich sediments, such as gyttja. These methods have been widely used for example in the former Soviet Union where most of the pollen analyses of mineral-rich samples have been done using Grichuk's heavy liquid method (Grichuk, 1940).

Several different chemical processes have been developed in order to remove both organic and mineral material. Whereas there is established practise for unwanted organic material removal (potassium hydroxide digestion and acetolysis), the ways to extract mineral particles is more variable. The most commonly used chemical to remove siliceous material has been treatment with concentrated hydrofluoric acid (HF), which is extremely corrosive and dangerous chemical and one of the most hazardous acids known (Leipe et al., 2019).

The use of HF to remove siliceous particles from sediment samples containing pollen was introduced by Assarsson & Granlund in 1924. The earliest published document introducing a heavy liquid solution technique to extract pollen with Thoulet's solution was written by Grichuk in 1937 (Leipe et al., 2019) although Thoulet's solution had already been used to concentrate diatoms from gyttja-type sediments (Hustedt, 1930). The use of Thoulet's solution (i.e. potassium iodide (KI), and mercury

iodide ( $\text{Hg}_2\text{I}_2$ ) for flotation, originally known as Sonstadt's solution, was first proposed by Sonstadt in 1874 (Gray, 1965). The use of bromoform in microfossil heavy liquid separation was first introduced by Knox (1942) although van der Kolk used bromoform already in 1895 for mineralogical purposes (i.e. heavy mineral separation) (Gray, 1965). Since then, the most commonly used heavy liquids in microfossil heavy liquid separation have been bromoform ( $\text{CHBr}_3$ ), zinc bromide ( $\text{ZnBr}_2$ ) and zinc chloride ( $\text{ZnCl}_2$ ), solution of potassium iodide (KI) and cadmium iodide ( $\text{CdI}_2$ ), stannic chloride ( $\text{SnCl}_4$ ) and Thoulet's solution (solution of potassium iodide, KI, and mercury iodide,  $\text{Hg}_2\text{I}_2$ ). Some of these solutions are highly toxic either on contact or inhaling the fumes what makes their use hazardous. If their use is unavoidable, extra caution should be exercised when these solutions are used in microfossil and other heavy liquid separation work. Within the European Union, all the laboratory analyses are regulated by the safety and health guidelines provided by the European Agency for Safety and Health at Work (<https://osha.europa.eu/en>) as well as manufacturers' chemical safety data sheets. The European legislation states that hazardous chemicals must be substituted by less hazardous or non-toxic chemicals. Therefore, it is vital to seek new or modified solutions and methods for safer microfossil work where heavy liquids are used.

The purpose of this paper is to review the toxicity of common chemicals use in heavy liquid separation and to introduce a safe heavy liquid method for the pollen sample preparation. We compare the pollen results prepared using silt and clay -rich sediments with 1) conventional HF treatment and 2) with low-toxic heavy liquid LST Fastfloat treatment on low organic silt-rich sediment. Comparing the results with two different treatments will shed light on the question whether the pollen results processed with these methods are comparable.

## 2. Toxicity of commonly used heavy liquids

Table 1 lists chemicals used in mineral material removal in pollen preparation according to their toxicity and health risks and in some cases their effect on life. Chemicals can be grouped here into three different categories where 1) highly toxic chemicals include hydrofluoric acid (HF), bromoform ( $\text{CHBr}_3$ ), solution of cadmium iodide ( $\text{CdI}_2$ ) and potassium iodide (KI) and Thoulet's solution (potassium iodide (KI) and mercury iodide ( $\text{Hg}_2\text{I}_2$ ), 2) toxic chemicals include zinc bromide ( $\text{ZnBr}_2$ ), zinc chloride ( $\text{ZnCl}_2$ ) and stannic chloride ( $\text{SnCl}_4$ ) and 3) low toxic chemicals that include lithium and sodium heteropolytungstates (LST) and sodium polytungstate (SPT; also known as sodium metatungstate).

Most of the heavy liquids contain halogenides and therefore, they are very or moderately toxic. This has led to the use of low-toxic heavy liquids in pollen extraction. The use of heavy liquids such as sodium metatungstate (known as sodium polytungstate, SPT) and lithium -based or sodium-based heteropolytungstates (LST), have become more common during the last decades (Van Ness et al., 2017). Here we concentrate on testing the mixture of lithium and sodium-based heteropolytungstates (LST Fastfloat) use in pollen work. LST Fastfloat is an aqueous solution composed of the lithium and sodium salts of low-toxic heteropolyanions.

## 3. Heteropolytungstate (LST) Fastfloat method – testing and comparison

Although the use of low-toxic, tungsten-based heavy liquids such as sodium polytungstate (SPT), lithium metatungstate (LMT) and lithium or sodium heteropolytungstate (LST) have been used in palynological studies since the late 1980s

Table 1. Toxicity of chemicals used in mineral material removal in pollen preparation.

Relative toxicity	Chemical reagent	Chemical effects and symptoms
Highly toxic	Hydrofluoric acid, HF	HF is one of the most hazardous acids known (Leipe et al., 2019). Exposure to HF can cause death (ICSC, 2017a). HF absorbs through the skin and can cause serious and severe burns to skin and eyes as HF is very corrosive. Inhalation of hydrofluoric acid causes cough, burning sensation, shortness of breath, nausea and vomiting. Ingestion causes burns in mouth and throat, abdominal pain, vomiting, collapse and shock. Skin burns caused by anhydrous hydrofluoric acid (100% concentration) as small as 2.5 % of body surface area is known to cause death (Tepperman, 1980).
	Bromoform, CHBr <sub>3</sub>	Bromoform is classified as toxic (by inhalation), harmful (if swallowed), irritant (serious eye irritation and skin irritation) and dangerous for the environment (toxic to aquatic life with long lasting effects). Absorption of bromoform may cause agitation, dizziness, unconsciousness, narcosis, tremors, pain in gastrointestinal tract and death. It may also cause central nervous system disorder, cardiovascular disorders, damage to kidneys and liver (Merck Material safety data sheet (MSDS); Pohanish, 2017). EPA (United States Environmental Protection Agency) has classified bromoform as a probable human carcinogen.
	Zinc bromide, ZnBr <sub>2</sub>	Zinc bromide is classified as corrosive to skin and very toxic to aquatic life with long lasting effects. Zinc bromide causes severe skin burns and eye damage. If zinc bromide is ingested it may cause severe burns of the mouth and throat, severe stomach pain and vomiting, diarrhoea, shock, collapse and death. 1 oz (ca. 30 g, 28,35 g) of bromide salts ingested is known to cause death (Gosselin et al., 1984). Bromide ion causes also drowsiness, ataxia, vertigo, mania, hallucinations and coma (Gosselin et al., 1984). If zinc bromide is inhaled, it may cause mucosal irritations, cough, wheezing, shortness of breath and possible damage the respiratory tract. Repeated or long-term exposure may cause headache, personality changes, poor appetite, lethargy and confusion (Merck MSDS; Pohanish, 2017).
	Potassium iodide + cadmium iodide solution, KI + CdI <sub>2</sub>	Potassium iodide causes damage to organs (thyroid) through prolonged or repeated exposure if ingested. No skin or eye irritation is registered (Merck MSDS). Cadmium iodide is classified as toxic if inhaled or ingested and is suspected of causing cancer. Cadmium iodide may lead to damaged organs if exposure is prolonged or repeated. Cadmium iodide is also very toxic to aquatic life with long lasting effects. (Sigma-Aldrich MSDS) Based on the IARC evaluation, there is sufficient evidence for cadmium and cadmium compounds to be classified as carcinogenic to humans (Group 1) (IARC, 2012). An oral dose of 25 mg/kg body weight of cadmium iodide is known to cause death, caused by the damage of liver, kidneys and overall depression of respiratory and circulatory centers (Wisniewska-Knypl et al., 1971).
	Thoulet's solution (potassium iodide + mercuric iodide), KI + Hg <sub>2</sub> I <sub>2</sub>	Mercury(II) iodide is classified as acutely toxic and fatal if ingested, inhaled or in contact with skin and very toxic to aquatic life with long lasting effects (Merck MSDS). Mercury iodide may cause damage to organs, especially kidneys, if exposure is prolonged or repeated (Merck MSDS). Inorganic mercury(II) salts are nephrotoxic (Magos & Webb, 1980), and accumulates both liver and kidney (Langford & Ferner, 1999). Mercury(II) iodide causes severe damages to eyes, mucosal membranes of gastrointestinal and respiratory tract, blood pressure drop, cardiac dysrhythmia, circulatory collapse and kidney failure (Merck MSDS). Ingested inorganic mercury salts act corrosively, causing initial effects such as painful necrotic lesions in mouth, esophagus and stomach (Gerstner & Huff, 1977), vomiting, bloody diarrhoea, hypovolaemic shock, mercurial stomatitis, loss of the teeth, renal damage and death (Langford & Ferner, 1999; Risher, 2003).

Toxic	Zinc chloride, ZnCl <sub>2</sub>	Zinc chloride is classified as a corrosive to skin and eyes causing severe damages and acutely toxic and harmful if ingested (Sigma-Aldrich MSDS). Inhaling zinc chloride corrodes respiratory tract and may cause cough, breathing difficulty, tachypnea, cyanosis (bluish skin), nausea and vomiting, bronchopneumonia and chest pain (Pohanish, 2017). Zinc chloride is corrosive on ingestion and causes sore throat and burning sensation, abdominal pain, nausea and vomiting and shock or collapse (ICSC, 2017b). Higher exposures either inhaled or ingested is known to cause death (e.g. Kondo et al., 2016; Hjortsø et al., 1988). Zinc chloride is also very toxic to aquatic life and causes long lasting effects after contamination (Sigma-Aldrich MSDS, ICSC 2017b).
	Stannic chloride, SnCl <sub>4</sub>	Stannic chloride (tin tetrachloride) is corrosive liquid (Larrañaga et al., 2016) and it is classified as corrosive to skin and harmful to aquatic life with long lasting effects. Stannic chloride causes severe and painful skin burns and permanent eye damage. (Merck MSDS; ICSC, 2004) If stannic chloride is inhaled, it may cause cough, sore throat, burning sensation and difficulty in breathing. Ingestion of stannic chloride may cause abdominal pain, burning sensation, shock or collapse (ICSC, 2004). Higher exposures may cause death (Pohanish, 2017).
Low-Toxic	Lithium heteropolytungstate, LST	Although stated as low-toxic, LST is classified as harmful if swallowed, harmful to aquatic organisms and it may cause long-term adverse effects in the aquatic environment. Risk of serious damage to eyes. Based on the tests, LST is non-irritant to skin and there is no indication of mutagenic nor clastogenic effects. LST does not form volatile vapours. (LST Fastfloat and LST Heavy Liquid MSDSs)
	Sodium polytungstate, SPT	Harmful if swallowed, harmful to aquatic life with long lasting effects. Causes serious eye damage. SPT is non-irritant to skin. SPT does not form volatile vapours. (SPT GeoLiquids MSDS)

Table 2. Previously published comparable studies between HF and heavy liquid methods in pollen analysis.

Reference	Microfossil group	Methods	Specific gravity (g/cm <sup>3</sup> )	Paired samples
Björck et al., 1978	Pollen	HF vs. ZnCl <sub>2</sub>	2.0	16
Nakagawa et al., 1998	Pollen	HF vs. CdI <sub>2</sub> and KI	1.88	11
Lentfer & Boyd, 2000	Phytoliths, pollen	HF vs. CdI <sub>2</sub> and KI	2.35	6
Zabenskie, 2006	Pollen	HF vs. SPT	1.95	2
Campbell et al., 2016	Pollen, non-pollen palynomorphs, microcharcoal	HF vs. SPT	1.88 - 1.91	30
Leipe et al., 2019	Pollen	HF, LST, SPT	2.1	5

(Krukowski, 1988; Savage, 1988), relatively few comparative pollen methodology studies have been published. As far as the authors know, only six comparable studies between HF and different heavy liquid separation method have been published (Table 2).

Based on careful literature review and comparison with previously published methods (e.g.

Zabenskie et al., 2006; Zabenskie & Gajewski, 2009; Caffrey & Horn 2009, 2013), we introduce here a modified LST Fastfloat method to extract pollen from interstadial and interglacial silt-rich sediment and compare the pollen results of the modified LST Fastfloat method with the results obtained using the conventional HF method.

## 4. Materials and Methods

The sediment samples used in this test are from Muhos, northern Ostrobothnia, Finland, from where a 54-metre-long sediment core was drilled in 2006 (lat. 64°811' N, long. 26°032' E, c. 29 m a.s.l.). The sediments in the core contain a thick sequence of Pleistocene and Holocene sediments including several diamicton units interbedded with sorted sediments (see Fig 2. Lunkka et al., 2013). The basal diamicton suite, resting upon the Neoproterozoic Muhos siltstone (so called Muhos Formation), passes into a thick sand-rich unit that contains laminated clay and silt layers. Samples from clay and silt rich sediment interval, Unit A, 29.55 – 29.83 m b.g.s. (29 cm thick laminated clay and silt, samples

MU 1 – MU 3) (Fig. 1a ) and silt-rich Unit B, 38.74 – 38.81 m below the ground surface (b.g.s) (8 cm long sediment interval, samples MU 4 and MU 5) (Fig. 1b) between two diamicton units were studied.

Determining the loss on ignition (LOI) is the basic method for characterising the amount of organic matter in a sample. Loss of ignition (LOI) analysis was carried out by drying the samples in 105 °C and heating the samples in 550 °C for 2 hours (SFS-EN 15935: 2012) (Table 3). The grain size distributions were determined using CILAS 1190 particle analyser. The samples were weighted in the ratio of 1 part soil to 10 parts 1 % sodium pyrophosphate solution and placed in a rocker mixer for overnight.

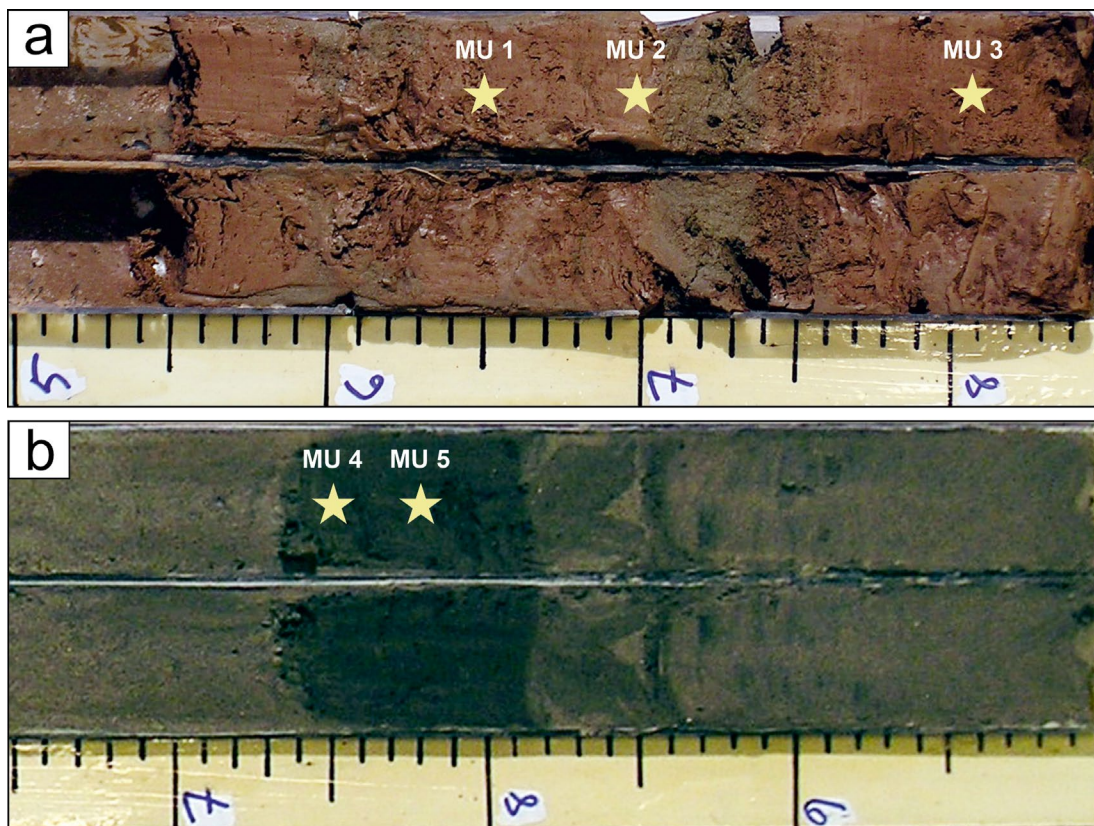


Figure 1. Sediments of the studied Muhos core. Sampling depths are indicated as stars. a) Sediment unit A, 29.55 – 29.83 m b.g.s. b) Sediment unit B, 38.74 – 38.81 m b.g.s. Photos by J. Annanulli.

Table 3. Sampled pair numbers and sampling depths, the amount of sediment used for pollen analysis, grain size distribution and loss of ignition results of tested samples.

Sample ID (m.b.g.s.)	weight (air-dry)	water content (%)	Grain size (Fraunhofer)	LOI (%)
MU 1 (29.65)	2.10 g	0.91%	Clayey silt	1.38%
MU 2 (29.70)	2.71 g	0.84%	silt	1.29%
MU 3 (29.81)	2.30 g	1.03%	silt	1.63%
MU 4 (38.75)	2.07 g (LST) – 2.14 g (HF)	n.a.	silt	n.a.
MU 5 (38.78)	1.95 g	1.32%	silt	4.24%

## 4.1. Pollen extraction and analysis

Samples taken for pollen analysis were homogenized and divided into two subsamples. The divided subsamples were treated with both by a heavy liquid separation (LST Fastfloat, a mixture of lithium and sodium heteropolytungstate) and by the conventional HF-method. Sodium pyrophosphate was used as a deflocculant before the HF treatment to increase the efficiency of clay particles removal (Bates et al., 1978).

### 4.1.1. Modified LST Fastfloat procedure

The LST procedure used for the selected samples in Table 3 included the following steps:

1. Air-dry -weighted sample is placed in a 50 ml conical-bottom polypropylene centrifuge tube and two *Lycopodium* spore tablets per sample are added ( $x = 18583$  grains/tablet, batch number 483 216) into the tube.
2. Addition of 5 ml 10 % HCl, let the pellets dissolve and stir the sample with a vortex mixer. Centrifuge at 4000 rpm for 5 min and decant the supernatant.
3. Addition of ca. 30 ml (2/3 of the centrifuge tubes' volume) distilled water and stir with a vortex mixer. Rinse the brim with a small amount of ethanol (ethyl alcohol) to break the surface tension. Centrifuge at 4000 rpm for 5 min, decant the supernatant.
4. Addition of ca. 30 ml 10 % KOH, vortex the sample and leave in the water bath (95 °C) for 8 min. Centrifuge at 4000 rpm for 5 min, decant the supernatant. Wash the sample with c. 30 ml of distilled water, vortex, rinse the brim with a small amount of ethanol and centrifuge at 4000 rpm for 5 min. Repeat washing with distilled water.
5. Addition of 5 ml 10 % HCl, vortex and centrifuge at 4000 rpm for 5 min, decant. Acidic solution prior the heavy liquid step may help removing the non-pollen material (Nakagawa et al., 1998; Zabenskie & Gajewski, 2009).
6. Addition of ca. 20 ml distilled water, vortex, rinse the brim with a small amount of ethanol and centrifuge at 4000 rpm for 5 min. (Make sure all the distilled water is poured off to avoid the dilution of the LST Fastfloat).
7. Addition of 5 ml LST Fastfloat at 1.95 g/cm<sup>3</sup>, place the centrifuge tube in stand with a holder and vortex for 5 min. Centrifuge at 1800 rpm for 10 min, decant the supernatant (with pollen and spores) into new 50 ml centrifuge tube.
8. Fill the centrifuge tube with distilled water and add a drop of ethanol, centrifuge at 4000 rpm for 5 min, decant the water-LST -mixture to a separate container for later recycling.
9. Add ca. 20 ml glacial acetic acid (CH<sub>3</sub>COOH), vortex (vigorously), centrifuge at 4000 rpm for 5 min and decant the supernatant.
10. Add ca. 20 ml of acetolysis mixture (9 parts acetic anhydride ((CH<sub>3</sub>CO)<sub>2</sub>O) and 1 part concentrated sulphuric acid (H<sub>2</sub>SO<sub>4</sub>)), stir carefully and place the sample in the water bath

- (95 °C) for 3 min. Centrifuge at 4000 rpm for 5 min, decant the supernatant.
11. Add ca. 20 ml glacial acetic acid ( $\text{CH}_3\text{COOH}$ ), vortex, centrifuge at 4000 rpm for 5 min and decant the supernatant.
  12. Wash the sample with ca. 20 ml distilled water, vortex, rinse the brim with a small amount of ethanol and centrifuge at 4000 rpm for 5 min, decant the supernatant.
  13. Add ca. 20 ml ethanol, vortex, centrifuge at 4000 rpm for 5 min, decant the supernatant. Stain the sample with a drop of safranin, vortex. Add ca. 20 ml ethanol, vortex, centrifuge at 4000 rpm for 5 min, decant the supernatant.
  14. Add ca. 20 ml of tertiary butyl alcohol (TBA), vortex, centrifuge at 4000 rpm for 5 min and decant the supernatant.
  15. Add few drips of silicone oil as a mounting medium and stir with a glass rod. Allow the TBA to evaporate (in fume cupboard) at least for 24 hours, add few drops of silicone oil if necessary.

#### 4.1.2. Conventional HF procedure

Steps 1–6 were identical in both, the modified LST Fastfloat-procedure (see above) and the HF-procedure. Decanted supernatants were examined under a light microscope to ensure that there was no loss of pollen or spores.

7. Add ca. 20 ml of 10 % sodium pyrophosphate ( $\text{Na}_4\text{P}_2\text{O}_7$ ), stir vigorously in vortex mixer and transfer the sample in a water bath (95 °C) for 10–20 min. Centrifuge at 3000 rpm for 5 min, decant the supernatant. Step 7 can be repeated several times if the sample contains lots of clay particles.
8. Add ca. 30 ml of distilled water, vortex, centrifuge at 4000 rpm for 5 min, decant the supernatant. Repeat x 5.
9. Add 10 ml 30–40 % of HF, vortex cautiously, place the sample to a water bath (95 °C) for 10 min. Centrifuge at 4000 rpm for 5 min, decant.

10. Add ca. 30 ml warm 10 % HCl, vortex cautiously, centrifuge at 4000 rpm for 5 min, decant the supernatant.
11. Add ca. 30 ml of distilled water, vortex, add a drop of ethanol, centrifuge at 4000 rpm for 5 min, decant the supernatant.

Steps 9–15 listed in LST Fastfloat-procedure are prepared in parallel with the HF method.

A minimum of 700 terrestrial vascular pollen and spores were counted from each sample to yield statistical reliability. The samples were examined using Nikon eclipse 50i light microscope with 400 x magnification and at least half of the slide was counted to minimize the possible uneven distribution of pollen and spores. Pollen and spore percentages were counted from the total sum which include arboreal and non-arboreal pollen, aquatic pollen, spores and unidentified pollen grains. Pollen percentage diagram was drawn with the TILIA program version 2.0.41.

#### 4.2. 95 % Confidence intervals

Counting pollen or any microfossil gives only an estimation of the true value of the microfossil population (e.g. Mosimann, 1965; Maher, 1972; Bennett & Willis, 2001). Even if the same sample is counted repeatedly, the results will not be exactly the same every time. Calculating 95 % confidence intervals gives the minimum and maximum limits for the true proportion of specified taxon with a probability of 0.95 (Maher, 1972). In this study the 95 % confidence intervals were calculated for the taxa reaching 5 or more percent at least in one sample pair. 95 % Confidence intervals, expressed as margins of error, were calculated for pollen proportions within the pollen sum as presented by Mosimann (1965).



## 5. Results

The visual and microscopic inspection of the chemically processed pollen samples differs markedly. The organic residual sample volume in the LST Fastfloat samples is significantly smaller than in the samples treated with conventional HF + sodium pyrophosphate procedure. In addition to the pollen, the residual in the LST Fastfloat samples contain only small amount of small-sized minerogenic particles whereas the samples processed with HF included mainly minerogenic particles and coarse organic fragments. Altogether

45 and 47 taxa were identified from LST Fastfloat and HF samples, respectively.

The pollen results of the comparative counts in total are presented in Fig. 2. Overall, *Betula* dominates the tree pollen spectra at both sampling levels after both HF and LST treatments. Other tree pollen include *Pinus* and *Alnus* and few percentages of *Picea* at the lower sampling level. Cyperaceae and Poaceae pollen percentages are around 5 % while *Salix* and Ericaceae constitute both only 1–2 % of the total pollen and spores counted. *Spaghnum* and Polypodiaceae spores range from 5 to 15 % of the total pollen and spores sum.

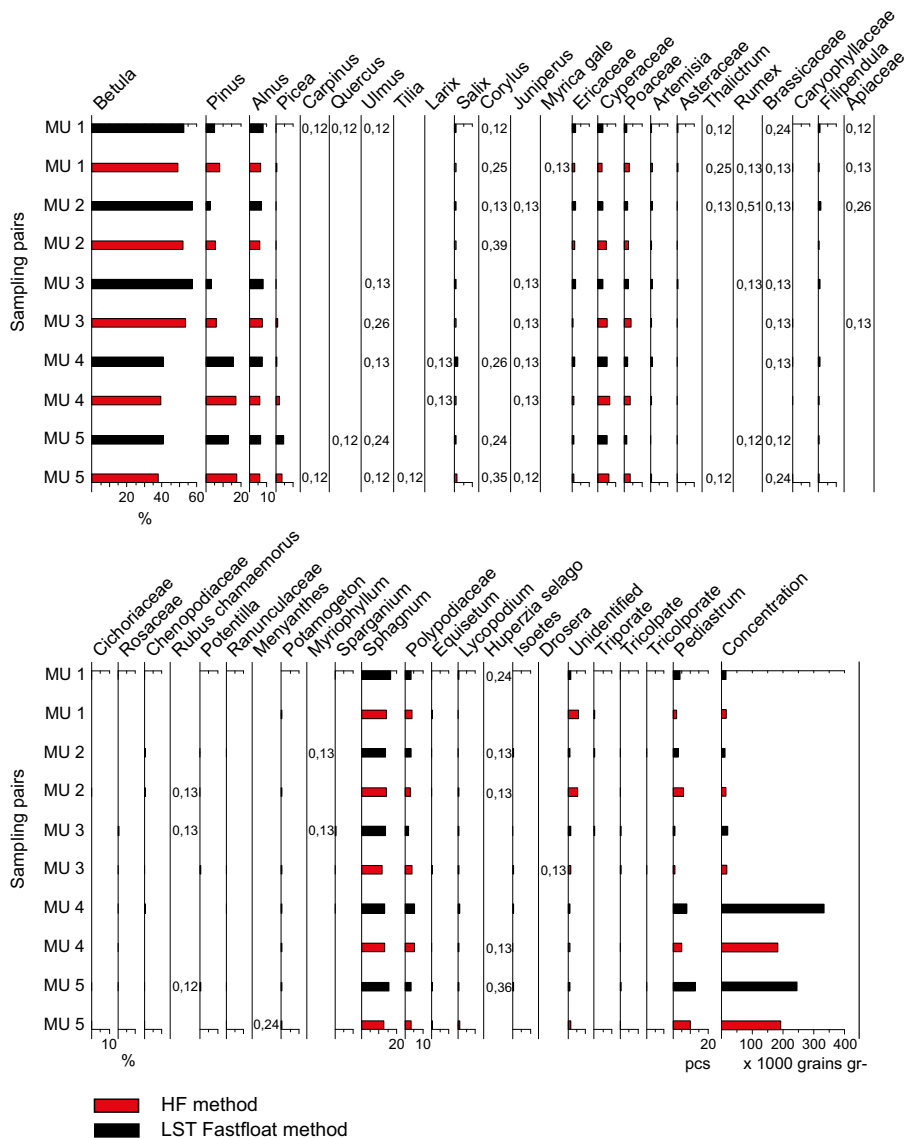


Figure 2. Results of pollen count in paired samples expressed as percentages and total concentration expressed as grains per gram, both for LST Fastfloat and HF samples. *Betula* includes *B. tree* + *B. nana*. Worn and thin-walled pollen are included.

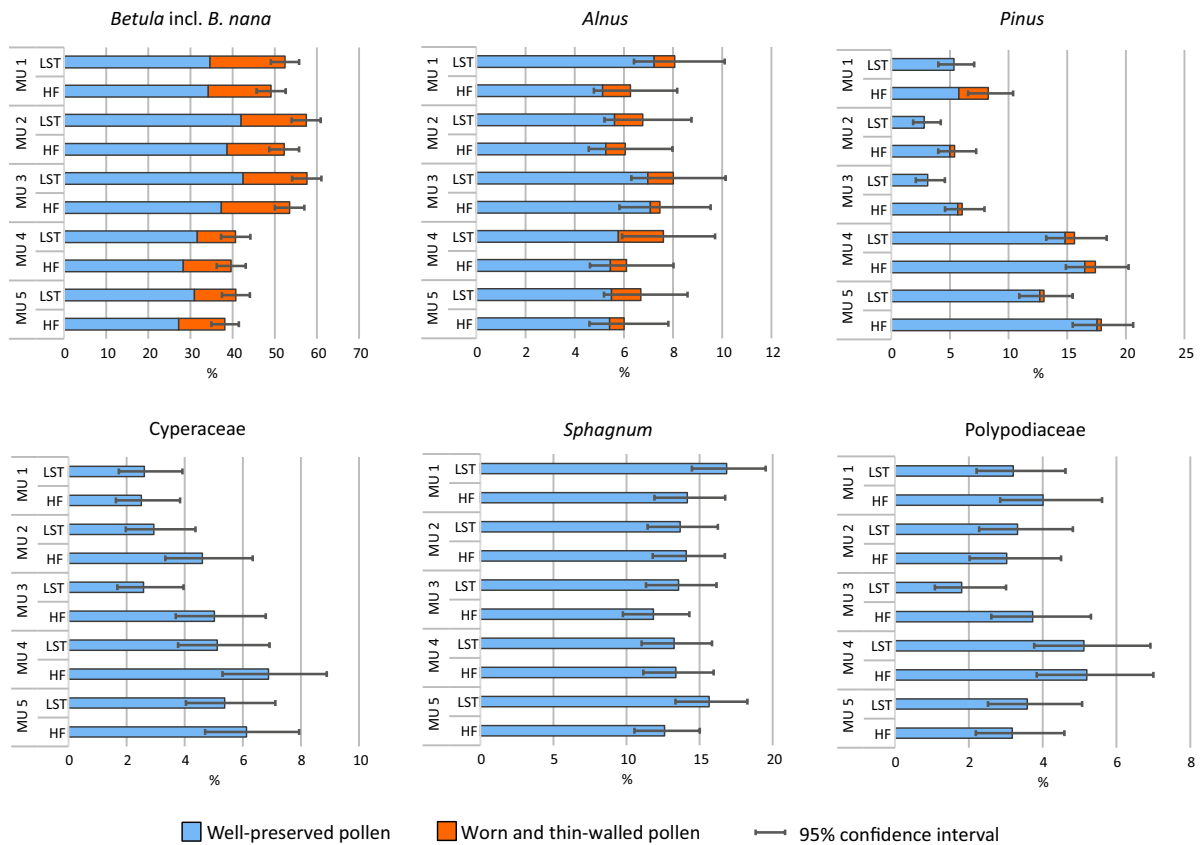


Figure 3. Selected taxa for the statistical comparison between HF and LST Fastfloat samples. Minimum of 5 % of the total sum at least in one sample pair with 95 % confidence interval.

A total amount of 6 different taxa (*Betula*, *Pinus*, *Alnus*, *Cyperaceae*, *Polypodiaceae*, *Sphagnum*) that reached at least 5 % in at least one pair of the samples treated with the HF and LST were selected for a more detailed study to test differences of the results of the HF and LST procedures. Well-preserved *Betula*, *Pinus* and *Alnus* and poorly preserved (broken and thin-walled pollen) *Betula*, *Pinus* and *Alnus* were counted separately and combined in the taxa diagrams shown in Fig. 3. Visual examination of the taxa shows only minor differences in pollen proportions concerning both major and minor taxa with the maximum difference of 5.18 (5.2 %) % for the most common taxa, i.e. *Betula* tree including *B. nana*.

Statistically the samples processed with either HF or LST are comparable except in one sampling

pair (MU 3) for *Pinus* although the statistics remain only slightly under the statistical significance level of 95 %. In sampling pair MU 5 the 95 % confidence limit overlap is zero. However, if only well-preserved *Pinus*-pollen are considered then the significance level for comparison of *Pinus* is under a threshold significance level 95 % only in sample pair MU 5.

The taxa reaching 5 % or over in the sample pair MU 1 at 29.65 metre-level comprise *Betula*, *Pinus*, *Alnus* and *Sphagnum*. All the mentioned taxa are statistically comparable. The relative abundances of *Betula*, *Alnus* and *Sphagnum* are higher in LST Fastfloat samples whereas *Pinus* percentage is higher in HF sample. The well-reserved *Pinus* proportion is almost the same (HF 5.76 % and LST Fastfloat 5.34 %) but the difference comes from the crumbled *Pinus* pollen: the HF sample contains

2.51 % worn and thin-walled *Pinus* pollen whereas no such *Pinus* pollen is registered in LST Fastfloat sample. Overall, the proportion of relatively small pollen, *Betula*, *Alnus* and somewhat *Sphagnum* are higher in LST Fastfloat sample and relatively big size pollen *Pinus* is higher in HF sample. Cyperaceae and Polypodiaceae represent less than 5 % of the taxa, and although not statistically significant the relative difference in the sample pair MU 1 is less than 1 %. The discrepancy between concentration values in LST Fastfloat and HF samples is minor; the concentration value for LST Fastfloat sample is ca. 15 500 grains gr<sup>-1</sup> whereas the concentration for HF sample is ca. 14 500 grains gr<sup>-1</sup>.

The individual taxa abundance of 5 % or over in sample pair MU 2 at 29.70 metre-level comprise the same taxa as in sample pair MU 1, *i.e.* *Betula*, *Pinus*, *Alnus* and *Sphagnum*, and the taxa are all statistically comparable. The relative abundances of *Betula* and *Alnus* are slightly higher in LST Fastfloat sample whereas the relative abundance of *Pinus* is much higher in HF sample (5.4 %) compared to LST Fastfloat sample (2.8 %). Cyperaceae and Polypodiaceae represent less than 5 % of the taxa, and although not statistically significant they relative difference in the sample pair MU 2 is less than 1.5 %. The concentration values are rather low for both LST Fastfloat and HF samples (ca. 11 400 grains gr<sup>-1</sup> and 14 200 grains gr<sup>-1</sup>, respectively); concentration in the LST Fastfloat is ca. 20 % smaller than in the HF sample.

*Betula*, *Alnus*, *Pinus*, *Sphagnum* and Cyperaceae reach the 5 % -level in the sample pair MU 3 at 29.81 metre-level of the core. *Betula*, *Alnus* and *Sphagnum* percentages are slightly higher in LST Fastfloat sample. In contrast, *Pinus* and Cyperaceae percentages are higher in HF sample. Results are statistically comparative considered the 95 % confidence interval except for *Pinus*, where the maximum LST error estimation and minimum HF error estimation differ less than 0.1 % which is just outside the 95 % confidence interval. The abundance of Polypodiaceae is less than 5 %. The concentration values for LST Fastfloat is ca. 20 200 grains gr<sup>-1</sup> and for HF is ca. 17 200 grains gr<sup>-1</sup>, thus

ca. 15 % smaller than the LST Fastfloat concentration.

Sample pair MU 4 at 38.75 metre-level contains six taxa reaching at least 5 %. Overall, the comparison between the HF and LST Fastfloat pollen percentages show only minor differences. Proportions of *Alnus* and *Betula* are higher in LST Fastfloat sample, latter only slightly. The proportions of *Pinus* and Cyperaceae are higher in the sample treated with the HF procedure. The presence of *Sphagnum* and Polypodiaceae are at the same level. All the taxa are statistically comparable. The concentration values differ drastically between the LST Fastfloat and HF samples: the LST Fastfloat concentration (ca. 333 700 grains gr<sup>-1</sup>) is nearly two times higher than the concentration in HF sample (ca. 183 200 grains gr<sup>-1</sup>).

Sample pair MU 5 at 38.78 metre-level comprises five taxa with the abundance over 5 %. Relative abundances of *Betula*, *Alnus* and *Sphagnum* are slightly higher in LST Fastfloat sample where relative abundances of *Pinus* and slightly Cyperaceae are higher in HF samples. The taxa are statistically comparable except for *Pinus* where the 95 % confidence interval is just 0.01 % outside the error. The abundance of Polypodiaceae is less than 5 %. The pollen and spore concentration in the LST Fastfloat sample is ca. 245 400 grains gr<sup>-1</sup> whereas the concentration for the HF sample is ca. 192 600 grains gr<sup>-1</sup>, thus nearly 22 % smaller than the LST Fastfloat concentration.

## 6. Discussion and conclusions

Sediments deposited in e.g. fluvial and large lake basins as well as paleosols and beach environments deposited in formerly glaciated areas, like in Fennoscandia, commonly contain organic matter including pollen within mainly minerogenic sediments. Thus it is important to use reliable and non-toxic methods for pollen extraction and pollen sample preparation. Here the protocol of a modified LST Fastfloat method is introduced and suggested for a preferred alternative to the conventional

HF method and other types of heavy liquid separations for pollen extraction from interstadial and interglacial sediments rich in minerogenic matter. The main benefit of using the modified LST Fastfloat method is that it is non-toxic and safe to use. In addition, the use of the modified LST Fastfloat method diminishes mineral matter in the final pollen slides compared to samples that are made with conventional HF method.

When extracting pollen with heavy liquid separation, the density of the heavy liquid plays an important role. Neither the density of the heavy liquid used cannot be too low, as there is a risk of losing heavier pollen, nor too high, as impurities may conceal critical pollen and also slow down the time spent when counting the sample. The exact density of the pollen and spores is not known as it varies because of the size and shape of the pollen grain, thickness of the pollen wall, different chemical treatments as well as the age of the pollen grain (Juvigné, 1973; Regnell & Everitt, 1996). Juvigné (1973) suggest as high as  $1.9 \text{ g/cm}^3$  density values for pollen and spores at age of beginning of the Würm (Weichselian) whereas recent pollen and spore exine density values are of  $1.4 \text{ g/cm}^3$ . In the study of Regnell and Everitt (1996) the recent pollen were "chemically fossilized" and measured mean isodensities in CsCl/water for e.g. *Betula pendula* and *Pinus sylvestris* were  $1.506 \text{ g/cm}^3$  and  $1.473 \text{ g/cm}^3$ , respectively.

Overall, pollen counts from identical sample pairs (MU 1-5) treated with the modified LST Fastfloat and the conventional HF method did not differ markedly, and the differences were neither systematic nor significant within one taxon except of *Betula* and *Pinus*. Percentages of *Betula* were systematically slightly higher in LST -processed samples but yet within the 95 % confidence interval whereas percentages of *Pinus* were slightly higher in HF -processed samples and that one sample was outside of the 95% confidence interval. However, the difference in this one sample pair was only one hundredth of a percent. Based on our results, it is suggested that conventional HF and LST -processed samples are comparable. Caution

is nevertheless suggested, as there are published only few comparable studies between heavy liquid method, especially LST, and HF methods.

There are no systematic difference in the concentration values. Altogether two *Lycopodium* spore tablets were added to every sample. At samples MU 1, MU 2 and MU 3 the concentration values are approximately at the same level. At samples MU 4 and MU 5 the concentration values are higher in the samples which are treated with the LST Fastfloat method. The concentration values at samples MU 4 and 5 may not necessarily represent the true concentration, as the counted marker grain (*Lycopodium* spores) related to counted pollen is too small for robust concentration. The counted marker grains per counted fossil pollen grains should ideally be between 1:5 to 1:1 (Maher, 1981; Moore et al., 1991) whereas the relationship between counted marker grains (*Lycopodium* spores) and counted fossil pollen were at samples MU 4 and 5 from 1:10 even to 1:20. This big difference in the fossil pollen: marker grain -ratio hampers the correlation and may thus be misleading. The big difference between the concentration values in LST Fastfloat and HF -processed samples at samples MU 4 and MU 5 cannot be explained based on the results. The physical properties of the MU 4 and MU 5 samples is rather similar when considered the grain size distribution but the organic content is approximately three times higher in the MU 5 and most likely also in MU4 samples, as the organic content could not be measured from sample MU 4 because of the small sample size. The depositional age of the sample, including its pollen is not relevant, as the *Lycopodium* marker grains added during the sample preparation are of the same age and density in both LST Fastfloat and HF treatments. Therefore further research needs to be done to shed light to this question.

This study clearly indicates that the pollen results obtained using modified LST Fastfloat samples can be compared with the pollen results of the samples treated with the conventional HF method. The modified LST Fastfloat -processed samples are safer to produce and the samples are

cleaner and more efficient for counting, as also noted by Nakagawa et al. (1998) and Campbell et al. (2016).

## References

- Assarsson, G. & Granlund, E., 1924. En metod för pollenanalys av minerogena jordarter. *Geologiska Föreningens I Stockholm Förhandlingar* 46, 76–82.
- Bates, C.D., Coxon, P. & Gibbard, P.L., 1978. A new method for the preparation of clay-rich sediment samples for palynological investigation. *New Phytologist* 81, 459–463. <https://doi.org/10.1111/j.1469-8137.1978.tb02651.x>
- Bennett, K.D. & Willis, K.J., 2001. Pollen. In: Smol, J.P., Birks, H.J.B., Last, W.M. (eds). *Tracking environmental change Using Lake Sediments. Volume 3: Terrestrial, Algal, and Siliceous Indicators*. Kluwer Academic Publisher, Dordrecht, The Netherlands, pp. 5–32.
- Björck, S., Persson, T. & Kristersson, I., 1978. Comparison of two concentration methods for pollen in minerogenic sediments. *Geologiska Föreningens I Stockholm Förhandlingar* 100, 107–111. <https://doi.org/10.1080/11035897809448568>
- Caffrey, M.A. & Horn, S.P. 2009. Lithium Heteropolytungstate (LST): A Non-toxic Heavy Liquid for Extracting Pollen and Other Palynomorphs from Lake Sediments and Soils. Poster, Annual meeting of AASP – The Palynological Society, Johnson City, Tennessee.
- Caffrey, M.A. & Horn, S.P., 2013. The use of lithium heteropolytungstate in the heavy liquid separation of samples which are sparse in pollen. *Palynology* 37, 143–150. <https://doi.org/10.1080/01916122.2012.736417>
- Campbell, J.F.E., Fletcher, W.J., Hughes, P.D. & Shuttleworth, E.L., 2016. A comparison of pollen extraction methods confirms dense-media separation as a reliable method of pollen preparation. *Journal of Quaternary Science* 31, 631–640. <https://doi.org/10.1002/jqs.2886>
- Faegri, K. & Iversen, K., 1989. *Textbook of Pollen Analysis*. 4th edition. John Wiley & Sons, Chichester, 328 p.
- Gerstner H.B. & Huff, J.E., 1977. Clinical toxicology of mercury. *Journal of Toxicology and Environmental Health* 2, 491–526. <https://doi.org/10.1080/15287397709529452>
- Gosselin, R.E., Smith, R.P. & Hodge, H.C., 1984. *Clinical Toxicology of Commercial Products*. 5th edition. Williams and Wilkins, Baltimore, London, 112 p.
- Gray, J., 1965. Extraction Techniques. In: Kummel, B., Raup, D. (eds.), *Handbook of Paleontological Techniques*. Freeman, San Francisco, pp. 530–587.
- Grichuk, V.P., 1940. Method of treatment of the sediments poor in organic remains for the pollen analysis. *Problemi fizicheskoi geographii* 8, 53–58. (in Russian)
- Hirvas, H., 1991. Pleistocene stratigraphy of Finnish Lapland. *Geological Survey of Finland, Bulletin* 454, 123 p.
- Hjortso, E., Qvist, J., Bud, M.I., Thomsen, J.L., Andersen, J.B., Wiberg-Jørgensen, F., Jensen, N.K., Jones, R., Reid, L.M. & Zapol W.M., 1988. ARDS after accidental inhalation of zinc chloride smoke. *Intensive Care Medicine* 14, 17–24. <https://doi.org/10.1007/BF00254116>
- Hustedt, F. 1930. *Die Kieselalgen Deutschlands, Österreichs und der Schweiz*. Dr. L. Rabenhorst's Kryptogamen-Flora von Deutschland, Österreich und der Schweiz 7, 920 p.
- International Agency for Research on Cancer (IARC), 2012. Cadmium and cadmium compounds. In: *IARC monographs on the evaluation of carcinogenic risks to humans: A review of human carcinogens. Part C: Arsenic, metals, fibres and dusts. Volume 100C*. World Health Organization, Lyon, 121–141.
- International Chemical Safety Card (ICSC) 2004. Tin(IV) chloride (anhydrous). The International Labor Organization.
- International Chemical Safety Card (ICSC), 2017a. Hydrofluoric acid (70% aqueous solution). The International Labor Organization.
- International Chemical Safety Card (ICSC), 2017b. Zinc chloride. The International Labor Organization.
- Juvigné, E., 1973. Densité des exines de quelques espèces de pollens et spores fossils. *Annales de la Société géologique de Belgique* 96, 363–374. (abstract in English)
- Knox, A.S., 1942. The use of bromoform in the separation of noncalcareous microfossils. *Science* 95, 307–308. <https://doi.org/10.1126/science.95.2464.307>
- Kondo, T., Takahashi, M., Watanabe, S., Ebina, M., Mizu, D., Ariyoshi, K., Asano, M., Nagasaki, Y. & Ueno Y., 2016. An autopsy case of zinc chloride poisoning. *Legal Medicine* 21, 11–14. <https://doi.org/10.1016/j.legalmed.2016.05.002>
- Krukowski, S.T., 1988. Sodium metatungstate: a new heavy-mineral separation medium for the extraction of conodonts from insoluble residues. *Journal of Paleontology* 62, 314–316. <https://doi.org/10.1017/S0022336000030018>

## Acknowledgements

The authors thank David Simpson at the Polytungstate Europe for providing information about LST Fastfloat. Teija Alenius and Normunds Stivrīns are thanked for their valuable comments that helped to improve the manuscript.

- Langford, N.J. & Ferner, R.E., 1999. Toxicity of mercury. *Journal of Human Hypertension* 13, 651–656.
- Larrañaga, M.D., Lewis Sr., R.J. & Lewis, R.A., 2016. *Hawley's Condensed Chemical Dictionary*. 16th edition. John Wiley & Sons, Inc., Hoboken, New Jersey, 1547 p.
- Leipe, C., Kobe, F. & Müller, S., 2019. Testing the performance of sodium polytungstate and lithium heteropolytungstate as non-toxic dense media for pollen extraction from lake and peat sediment samples. *Quaternary International* 516, 207–214.  
<https://doi.org/10.1016/j.quaint.2018.01.029>
- Lentfer, C.J. & Boyd, W.E., 2000. Simultaneous Extraction for Phytoliths, Pollen and Spores from Sediment. *Journal of Archaeological Science* 27, 363–372.  
<https://doi.org/10.1006/jasc.1998.0374>
- Loader, N.J. & Hemming, D.L., 2004. The stable isotope analysis of pollen as an indicator of terrestrial palaeoenvironmental change: a review of progress and recent developments. *Quaternary Science Reviews* 23, 893–900.  
<https://doi.org/10.1016/j.quascirev.2003.06.015>
- Lunkka, J.P., Murray, A. & Korpela, K., 2008. Weichselian sediment succession at Ruunaa, Finland, indicating a Mid-Weichselian ice-free interval in eastern Fennoscandia. *Boreas* 37, 234–244.  
<https://doi.org/10.1111/j.1502-3885.2007.00021.x>
- Lunkka, J.P., Peuraniemi, V. & Nikarmaa, T., 2013. Application of till geochemical and indicator mineral data to the interpretation of the thick till sequence at Muhos, northern Finland. *Geochemistry: Exploration, Environment, Analysis* 13, 183–193.  
<https://doi.org/10.1144/geochem2012-119>
- Magos, L. & Webb, M., 1980. The interactions of selenium with cadmium and mercury. *Critical Reviews in Toxicology* 8, 1–42.  
<https://doi.org/10.3109/10408448009037490>
- Maher, L.J. Jr., 1972. Nomograms for computing 0.95 confidence limit of pollen data. *Review of Palaeobotany and Palynology* 13, 85–93.  
[https://doi.org/10.1016/0034-6667\(72\)90038-3](https://doi.org/10.1016/0034-6667(72)90038-3)
- Maher, L.J. Jr., 1981. Statistics for microfossil concentration measurements employing samples spiked with marker grains. *Review of Palaeobotany and Palynology* 32, 153–191.  
[https://doi.org/10.1016/0034-6667\(81\)90002-6](https://doi.org/10.1016/0034-6667(81)90002-6)
- Moore, P.D., Webb, J.A. & Collinson, M.E., 1991. *Pollen analysis*. 2nd edition. Blackwell Science, Oxford, 216 p.
- Mosimann, J.E., 1965. *Statistical Methods for the Pollen Analyst: Multinomial and Negative Multinomial Techniques*. In: Kummel, B., Raup, D. (eds.). *Handbook of Paleontological Techniques*. Freeman, San Francisco, pp. 636–673.
- Nakagawa, T., Brugiapaglia, E., Digerfeldt, G., Reille, M., de Beaulieu, J.-L. & Yasuda, Y., 1998. Dense-media separation as a more efficient pollen extraction method for use with organic sediment/deposit samples: comparison with the conventional method. *Boreas* 27, 15–24.  
<https://doi.org/10.1111/j.1502-3885.1998.tb00864.x>
- Nenonen, K., 1995. *Pleistocene Stratigraphy and Reference Sections in Southern and Western Finland*. Geological Survey of Finland, Kuopio, 205 p.
- Pitkäranta, R., Lunkka, J.P. & Eskola, K.O., 2014. Lithostratigraphy and Optically Stimulated Luminescence age determinations of pre-Late Weichselian deposits in the Suupohja area, western Finland. *Boreas* 43, 193–207.  
<https://doi.org/10.1111/bor.12030>
- Pohanish, R.P., 2017. *Sittig's Handbook of Toxic and Hazardous Chemicals and Carcinogens*. 7th edition. William Andrew, Oxford, Cambridge, 3613 p.
- Regnéll, J. & Everitt, E., 1996. Preparative centrifugation – a new method for preparing pollen concentrates suitable for radiocarbon dating by AMS. *Vegetation History and Archaeobotany* 5, 201–205.
- Riding, J.B. & Kyffin-Hughes, J.E., 2004. A review of the laboratory preparation of palynomorphs with a description of an effective non-acid technique. *Revista Brasileira de Paleontologia* 7, 13–44.
- Risher, J.F., 2003. *Elemental mercury and inorganic mercury compounds: human health aspects*. Concise International Chemical Assessment Document 50, World Health Organization, Geneva.  
<http://www.who.int/ipcs/publications/cicad/en/cicad50.pdf>
- Savage, N.M., 1988. The use of sodium polytungstate for conodont separations. *Journal of Micropalaeontology* 7, 39–40.  
<https://doi.org/10.1144/jm.7.1.39>
- Sonstadt, E., 1874. Note on a new method of taking specific gravities, adapted for special cases. *Chemical News and Journal of Physical Science* 29, 127–128.
- Tepperman, P.B., 1980. Fatality Due to Acute Systemic Fluoride Poisoning Following a Hydrofluoric Acid Skin Burn. *Journal of Occupational Medicine* 22, 691–692.
- Traverse, A., 2007. *Paleopalynology*. 2nd edition. Springer, Berlin, 816 p.
- Van Ness, B.G., Black, M.K., Gullett, C.R. & O'Keefe, J.M.K., 2017. A recycling method for LST® contaminated during heavy liquid separation in palynological processing. *Palynology* 41, 498–503.  
<https://doi.org/10.1080/01916122.2017.1283368>
- Wisniewska-Knypl, J.M., Jablonska, J. & Myslak, Z., 1971. Binding of Cadmium on Metallothionein in Man: An Analysis of a Fatal Poisoning by Cadmium Iodide. *Archives of Toxicology* 28, 46–55.
- Zabenskie, S., 2006. *Post-Glacial Climatic Change on Boothia Peninsula, Nunavut, Canada*. M.Sc. Thesis, University of Ottawa, Canada, 98 p.
- Zabenskie, S., Peros, M. & Gajewski, K., 2006. The use of heavy-liquids in the separation of pollen from Arctic lake sediments. *Canadian Association of Palynologists, Newsletter* 29, 5–7.
- Zabenskie, S. & Gajewski, K., 2009. Processing Arctic sediments including heavy-liquid (Sodium Polytungstate (SPT)) concentration of pollen grains. University of Ottawa.  
[\[http://www.lpc.uottawa.ca/resources/pollen%20-%20heavy%20liquid.html\]](http://www.lpc.uottawa.ca/resources/pollen%20-%20heavy%20liquid.html)