

B-type natriuretic peptide ability to predict mortality after transcatheter aortic valve replacement

Heidi Lehtola^a, Jarkko Piihola^a, Matti Niemelä^a, Tuomas Tauriainen^b, Juhani Juntila^a, Timo Mäkikallio^c, Tatu Juvonen^{b,d} and Fausto Biancari^{b,d}

J Cardiovasc Med 2022, 23:e18–e20

Keywords: B-type natriuretic peptide, transcatheter aortic valve implantation, transcatheter aortic valve replacement

^aDepartment of Internal Medicine, Oulu University Hospital, Oulu, ^bHeart and Lung Center, Helsinki University Hospital and University of Helsinki, ^cUniversity of Helsinki, Helsinki and ^dResearch Unit of Surgery, Anesthesia and Critical Care, Faculty of Medicine, University of Oulu, Oulu, Finland

Correspondence to Heidi Lehtola, MD, PhD, Department of Internal Medicine, Oulu University Hospital, Kajaanintie 50, 90220 Oulu, Finland
Tel: +358 8315 8224; e-mail: heidi.m.lehtola@gmail.com

Received 6 November 2020 Revised 14 May 2021
Accepted 19 June 2021

To the Editor

An increased baseline brain natriuretic peptide (BNP)/pro-BNP level is predictive of mortality after transcatheter aortic valve replacement (TAVR) for aortic stenosis.^{1–9} In this study, we investigated whether BNP may have an incremental prognostic effect in these patients.

Methods

This study includes data on 293 patients who underwent TAVR with newer generation devices [Evolut R (Medtronic Inc, Minneapolis, Minnesota, USA) $N=50$; Sapien 3 (Edwards Lifesciences, Irvine, California, USA) $N=190$; ACURATE neo (Boston Scientific, Marlborough, Massachusetts, USA) $N=36$; Lotus (Boston Scientific, Marlborough, Massachusetts, USA) $N=17$] at the Oulu University Hospital, Finland, from 2014 to 2017. The Institutional Review Board approved this study. Mortality data were obtained from the Population Register Center with a follow-up coverage of 100%.

Statistical analysis was performed with Stata v. 15.1 software (StataCorp LLC, Texas, USA). The area under the curve (AUC) of the receiver-operating characteristics (ROC) curve was estimated to assess the discrimination ability of the baseline BNP to predict mortality. The Youden's test was used to identify the best cutoff of BNP in predicting outcomes. Logistic regression and the Cox proportional hazard method were used for multivariate analysis. The DeLong test was used to assess the difference between the AUCs of different regression models. P less than 0.05 was set for statistical significance.

Results

The data of the patient cohort are summarized in Table 1. Transfemoral access was used in 276 (94.2%) patients. Mean follow-up was 2.3 ± 1.0 years. Mortality was 3.1% at 30 days and 19.4% at 3 years. Late mortality increased along with increasing quintiles of baseline BNP (Fig. 1).

When baseline BNP was transformed into its natural logarithm, it was an independent predictor of 30-day [odds ratio (OR) 2.241, 95% confidence interval (CI) 1.431–7.343] and 3-year mortality (hazard ratio 1.527, 95% CI 1.105–2.209) (Table 1). The ROC AUC for 30-day mortality was 0.752 (95%CI 0.572–0.932) and for 3-year mortality was 0.657 (95% CI 0.573–0.741). The best cutoff of baseline BNP was 690 pg/ml for 30-day mortality (11.3 vs. 1.3%, adjusted OR 11.936, 95% CI 2.369–60.144), and it had an impact also on 3-year mortality (36.1 vs. 15.8%, adjusted hazard ratio 2.451, 95% CI 1.299–4.623).

Logistic regression showed that baseline BNP either as a continuous variable or as cutoff of baseline BNP of 690 pg/ml was not predictive of 30-day mortality when adjusted for EuroSCORE II and STS score. Cox proportional hazard analysis showed that baseline BNP as a continuous variable was not predictive of 3-year mortality when adjusted for EuroSCORE II and STS score. However, a cutoff of baseline BNP was 690 pg/ml was predictive of 3-year mortality either adjusted for EuroSCORE II (hazard ratio 2.110, 95%CI 1.085–4.105) or STS score (hazard ratio 1.936, 95% CI 1.005–3.729).

Comment

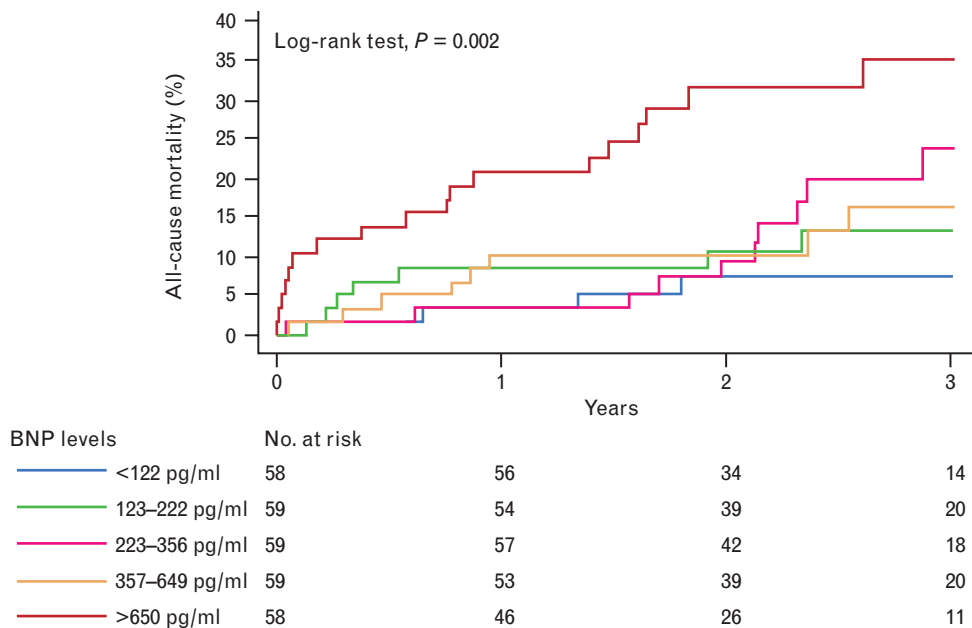
The present study confirmed that BNP was an independent predictor of early and late mortality after TAVR when adjusted for other significant variables.^{1–8} A few studies investigated whether BNP/pro-BNP may increase the predictive ability of current risk-scoring methods in patients undergoing cardiovascular interventions but not all studies were able to demonstrate this effect when BNP/pro-BNP was added to the EuroSCORE or STS scores.^{10–14} In the present study, baseline BNP levels were predictive of 30-day and 3-year mortality when adjusted for other independent clinical risk factors. However, when adjusted for the STS score and the EuroSCORE II, only BNP dichotomized

Table 1 Baseline characteristics of patients undergoing transcatheter aortic valve replacement and risk estimates of 30-day and 3-year mortality

	No. (%) / mean (SD)	30-day mortality OR, 95%CI	Three-year mortality (HR, 95% CI)
Age (years)	82.1 (6.1)		
Female	158 (53.9)		
Brain natriuretic peptide (pg/ml)	471 (578)	^a 3.241, 1.431–7.343	^a 1.527, 1.105–2.109
Anemia	105 (35.8)		1.912, 1.026–3.561
eGFR (ml/min/1.73 m ²)	63 (18.0)		0.984, 0.969–0.999
Diabetes	89 (30.4)		
Coronary artery disease	104 (35.5)	10.015, 1.688–59.440	
Recent myocardial infarction	2 (0.7)		
Prior cardiac surgery	47 (16.0)		
Prior percutaneous coronary intervention	69 (23.5)		
Critical preoperative state/acute heart failure	27 (9.2)		
Prior aortic balloon valvuloplasty	13 (4.4)		
Prior stroke	28 (9.6)		
Extracardiac arteriopathy	57 (19.5)	5.895, 1.228–28.308	
Atrial fibrillation	117 (39.9)		
Prior pacemaker	29 (9.9)		
Pulmonary disease	76 (25.9)		
NYHA functional classes			
I	2 (0.7)		
II	47 (16.0)		
III	233 (79.5)		
IV	11 (3.8)		
LVEF ≤50%	68 (23.2)		
Moderate/severe mitral valve regurgitation	58 (20.2)		
SPAP			
31–55 mmHg	136 (46.4)		
>55 mmHg	41 (14.0)		
EuroSCORE II (%)	7.1 (8.3)		
STS score (%)	4.0 (2.3)		

Continuous variables are reported as means ± standard deviation (SD) and categorical variables as counts and percentages. CI, confidence interval; eGFR, glomerular filtration estimated according to the CKD-EPI equation; HR, hazard ratio; LVEF, left ventricular ejection fraction; NYHA, New York Heart Association; OR, odds ratio; PCI, percutaneous coronary intervention; SPAP, systemic pulmonary artery pressure; STS, Society of Thoracic Surgeons. ^aLogarithmically transformed; clinical variables are according to the EuroSCORE II definition criteria.

Fig. 1



Survival according to baseline brain natriuretic peptide quintiles (log-rank test, $P < 0.0001$).

according to its cutoff value of 690 pg/ml was predictive of 3-year mortality. We speculate that the relatively small size of this series might lead to type II error.

Conclusion

The present findings showed that baseline BNP levels were predictive of early and mid-term mortality after TAVR with newer generation devices. However, the incremental prognostic value of BNP in TAVR over current risk scores may be limited and should be further assessed in larger studies.

Conflicts of interest

There are no conflicts of interest.

References

- 1 Abramowitz Y, Chakravarty T, Jilaihawi H, *et al*. Impact of preprocedural b-type natriuretic peptide levels on the outcomes after transcatheter aortic valve implantation. *Am J Cardiol* 2015; **116**:1904–1909.
- 2 Gotzmann M, Czauderna A, Aweimer A, *et al*. B-type natriuretic peptide is a strong independent predictor of long-term outcome after transcatheter aortic valve implantation. *J Heart Valve Dis* 2014; **23**:537–544.
- 3 Kefer J, Beauloye C, Astarci P, *et al*. Usefulness of B-type natriuretic peptide to predict outcome of patients treated by transcatheter aortic valve implantation. *Am J Cardiol* 2010; **106**:1782–1786.
- 4 Koskinas KC, O'Sullivan CJ, Heg D, *et al*. Effect of B-type natriuretic peptides on long-term outcomes after transcatheter aortic valve implantation. *Am J Cardiol* 2015; **116**:1560–1565.
- 5 Lopez-Otero D, Trillo-Nouche R, Gude F, *et al*. Pro B-type natriuretic peptide plasma value: a new criterion for the prediction of short- and long-term outcomes after transcatheter aortic valve implantation. *Int J Cardiol* 2013; **168**:1264–1268.
- 6 Mizutani K, Hara M, Iwata S, *et al*. Elevation of B-type natriuretic peptide at discharge is associated with 2-year mortality after transcatheter aortic valve replacement in patients with severe aortic stenosis: insights from a multicenter prospective OCEAN-TAVI (optimized transcatheter valvular intervention-Transcatheter aortic valve implantation) registry. *J Am Heart Assoc* 2017; **6**:e006112.
- 7 O'Neil BP, Guerrero M, Thourani VH, *et al*. Prognostic value of serial B-type natriuretic peptide measurement in transcatheter aortic valve replacement (from the PARTNER Trial). *Am J Cardiol* 2015; **115**:1265–1272.
- 8 O'Sullivan CJ, Stortecky S, Heg D, *et al*. Impact of B-type natriuretic peptide on short-term clinical outcomes following transcatheter aortic valve implantation. *Eurointervention* 2015; **10**:e1–e8.
- 9 Gerber I, Legget ME, West TM, *et al*. Usefulness of serial measurement of n-terminal pro-brain natriuretic peptide plasma levels in asymptomatic patients with aortic stenosis to predict deterioration. *Am J Cardiol* 2005; **95**:898–901.
- 10 Lurati Buse GA, Bolliger D, Seeberger E, *et al*. Troponin T and B-type natriuretic peptide after on-pump cardiac surgery: prognostic impact on 12-month mortality and major cardiac events after adjustment for postoperative complications. *Circulation* 2014; **130**:948–957.
- 11 Cuthbertson BH, Croal BL, Rae D, *et al*. N-terminal pro-B-type natriuretic peptide concentrations and long-term outcome after cardiac surgery: a prospective cohort study. *Br J Anaesth* 2013; **110**:214–221.
- 12 Holm J, Vidlund M, Vanky F, *et al*. EuroSCORE II and N-terminal pro-B-type natriuretic peptide for risk evaluation: an observational longitudinal study in patients undergoing coronary artery bypass graft surgery. *Br J Anaesth* 2014; **113**:75–82.
- 13 Mentias A, Patel K, Patel H, *et al*. Prognostic utility of brain natriuretic peptide in asymptomatic patients with significant mitral regurgitation and preserved left ventricular ejection fraction. *Am J Cardiol* 2016; **117**:258–263.
- 14 Alashi A, Mentias A, Patel K, *et al*. Synergistic utility of brain natriuretic peptide and left ventricular global longitudinal strain in asymptomatic patients with significant primary mitral regurgitation and preserved systolic function undergoing mitral valve surgery. *Circ Cardiovasc Imaging* 2016; **9**:e004451.